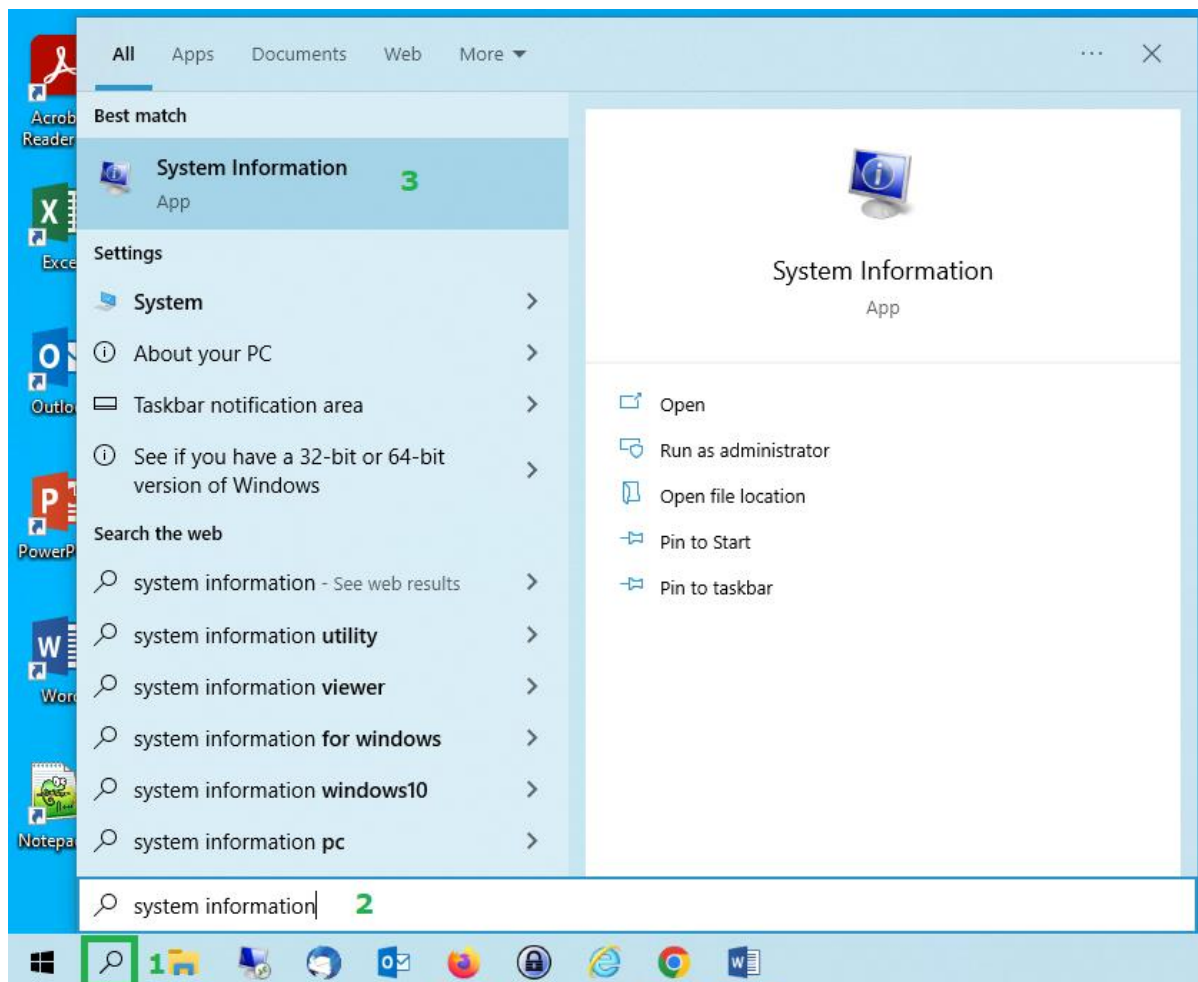
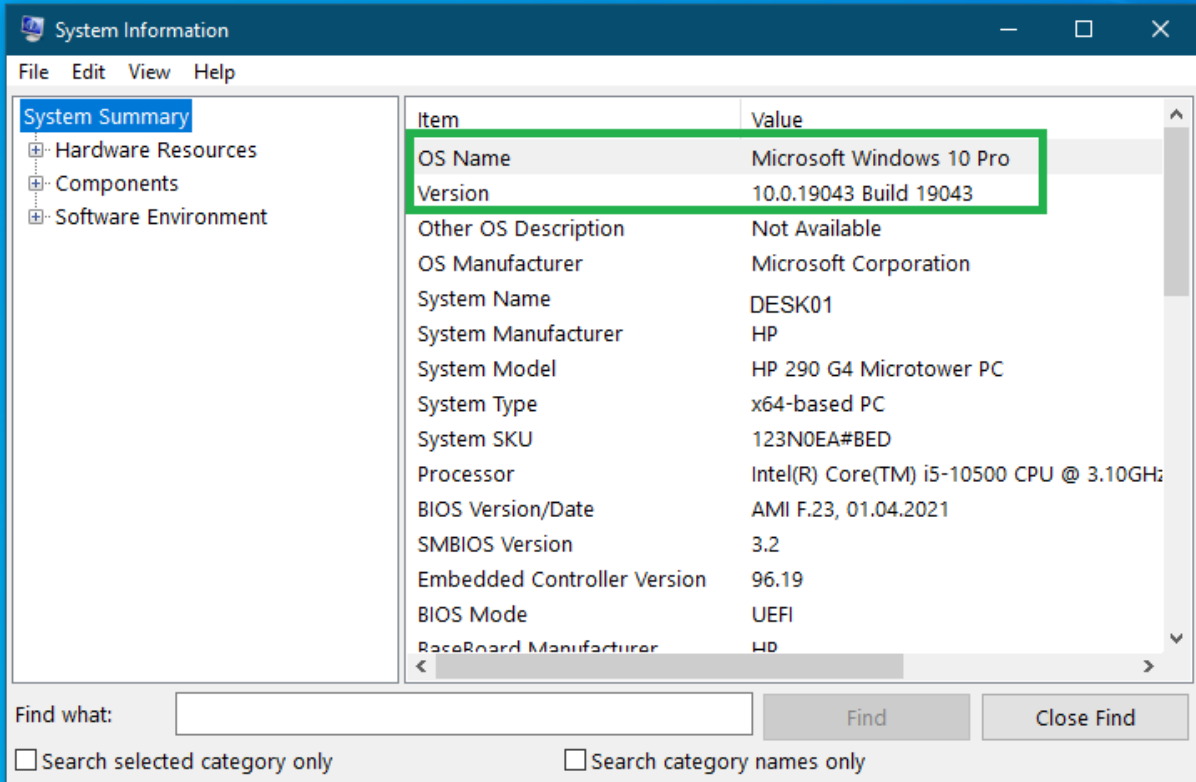


Kako pronaći koju verziju OS imam na računaru?

1. Kliknite na lupu na startnoj liniji,
2. upišite **System Information**,
3. kliknite na prikazanu ikonicu aplikacije **System Information**.



Naziv operativnog sistema i verzija su prikazani u levoj koloni. Takođe ovde je prikazan i User Name.

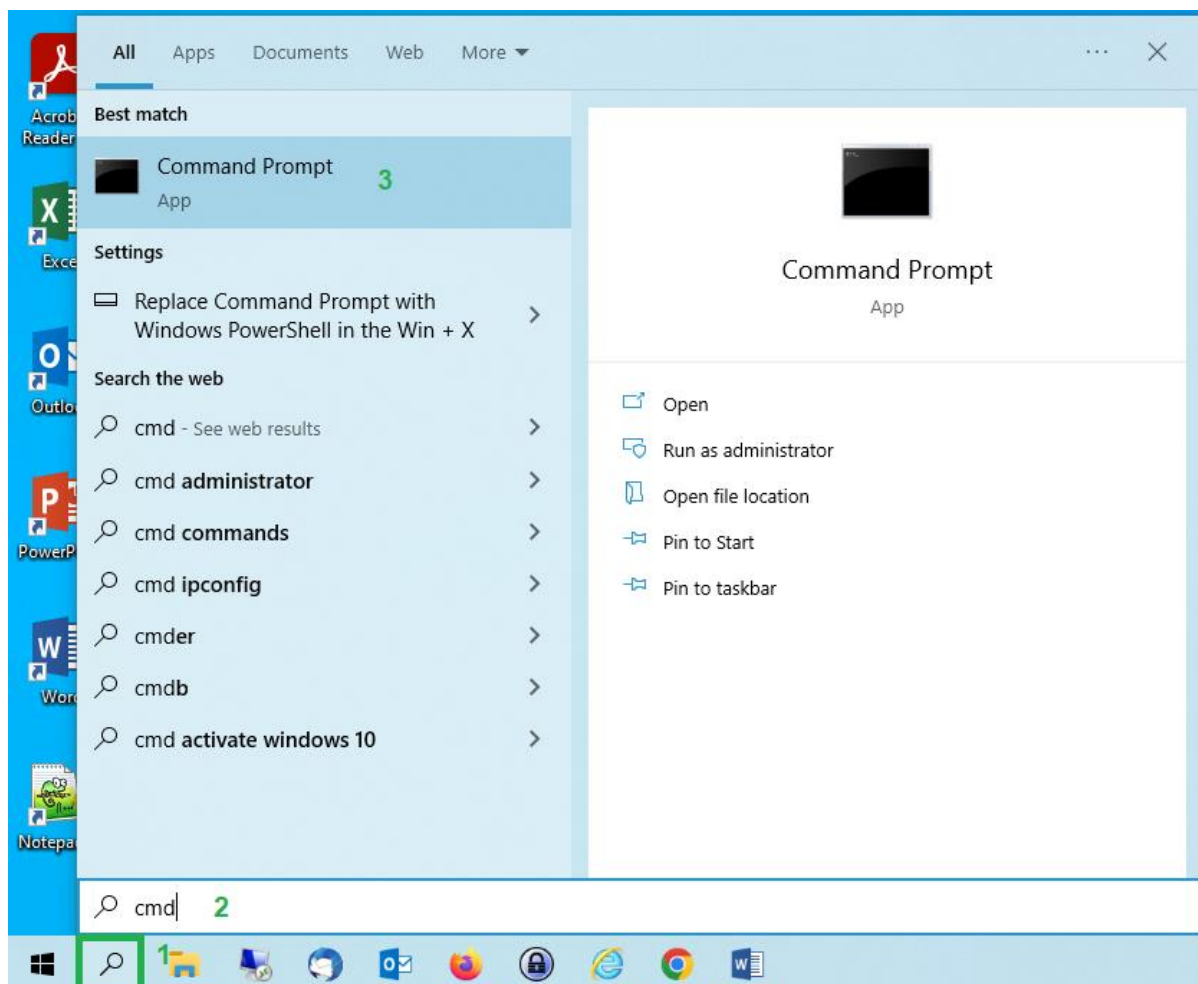


The screenshot shows the Windows System Information application. The left sidebar is expanded to 'System Summary', which includes 'Hardware Resources', 'Components', and 'Software Environment'. The main pane displays a table of system information. The 'OS Name' and 'Version' rows are highlighted with a green border. Below the table is a search bar labeled 'Find what:' with 'Find' and 'Close Find' buttons. At the bottom, there are two checkboxes: 'Search selected category only' and 'Search category names only'.

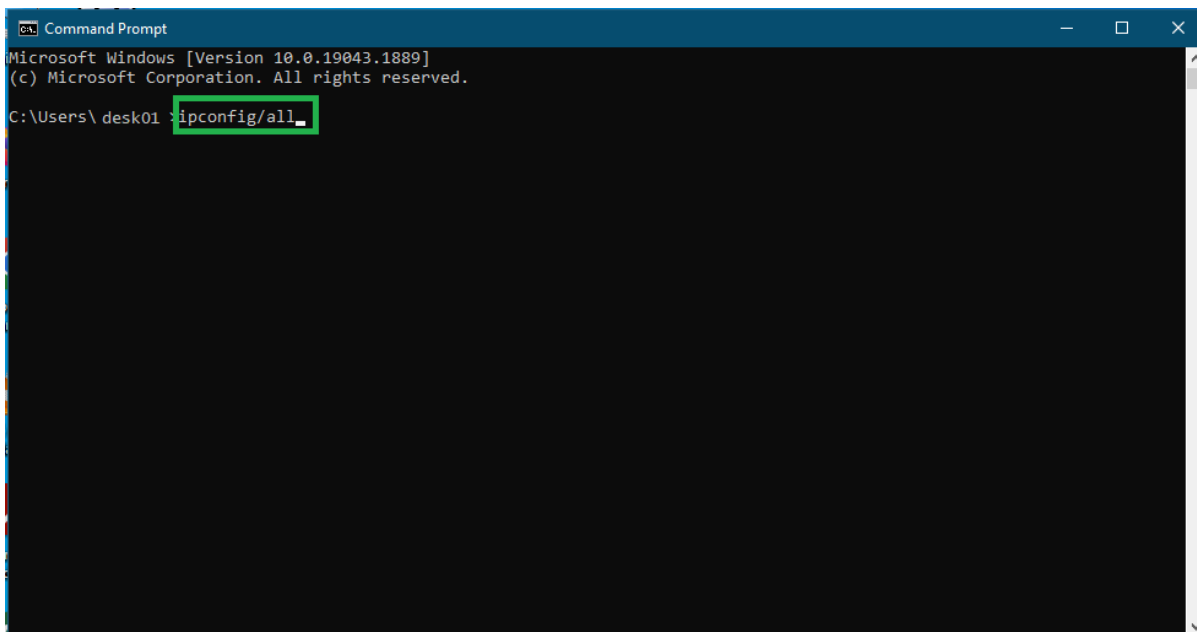
Item	Value
OS Name	Microsoft Windows 10 Pro
Version	10.0.19043 Build 19043
Other OS Description	Not Available
OS Manufacturer	Microsoft Corporation
System Name	DESK01
System Manufacturer	HP
System Model	HP 290 G4 Microtower PC
System Type	x64-based PC
System SKU	123N0EA#BED
Processor	Intel(R) Core(TM) i5-10500 CPU @ 3.10GHz
BIOS Version/Date	AMI F.23, 01.04.2021
SMBIOS Version	3.2
Embedded Controller Version	96.19
BIOS Mode	UEFI
BaseBoard Manufacturer	HP

Kako pronaći koju MAC adresu imam na računaru?

1. Kliknite na lupu na startnoj liniji,
2. upišite **cmd**,
3. kliknite na prikazanu ikonicu aplikacije **Command Prompt**.

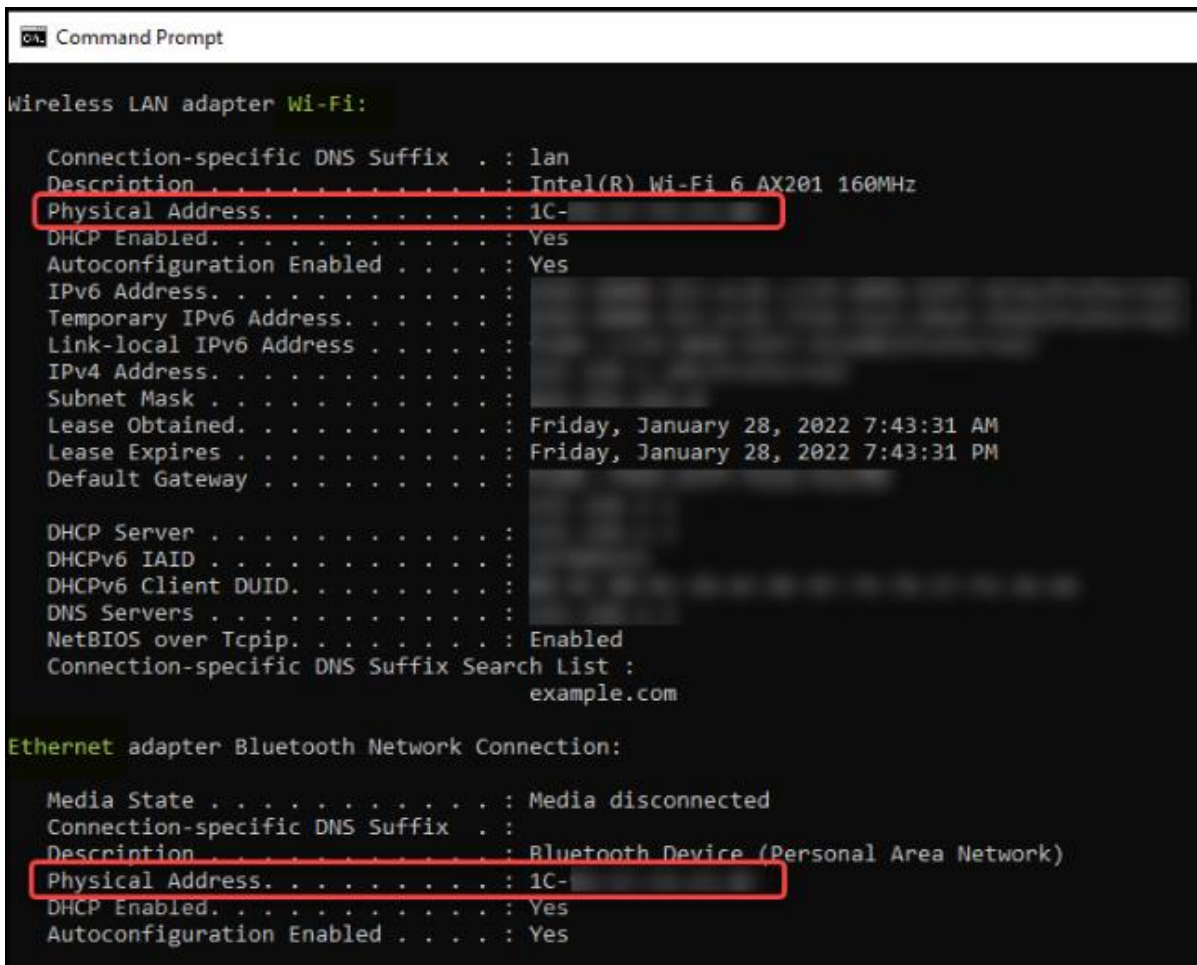


4. Ukucajte **ipconfig/all** i pritisnite **Enter** na tastaturi.



```
Command Prompt
Microsoft Windows [Version 10.0.19043.1889]
(c) Microsoft Corporation. All rights reserved.
C:\Users\desk01> ipconfig/all
```

5. Pogledajte pod **Physical Address**. Takođe ovde možete pogledati i **Host Name** pod **Windows IP Configuration**.



```
Command Prompt
Wireless LAN adapter Wi-Fi:
Connection-specific DNS Suffix . . : lan
Description . . . . . : Intel(R) Wi-Fi 6 AX201 160MHz
Physical Address. . . . . : 1C-
DHCP Enabled. . . . . : Yes
Autoconfiguration Enabled . . . . : Yes
IPv6 Address. . . . . :
Temporary IPv6 Address. . . . . :
Link-local IPv6 Address . . . . . :
IPv4 Address. . . . . :
Subnet Mask . . . . . :
Lease Obtained. . . . . : Friday, January 28, 2022 7:43:31 AM
Lease Expires . . . . . : Friday, January 28, 2022 7:43:31 PM
Default Gateway . . . . . :

DHCP Server . . . . . :
DHCPv6 IAID . . . . . :
DHCPv6 Client DUID. . . . . :
DNS Servers . . . . . :
NetBIOS over Tcpi . . . . . : Enabled
Connection-specific DNS Suffix Search List :
example.com

Ethernet adapter Bluetooth Network Connection:
Media State . . . . . : Media disconnected
Connection-specific DNS Suffix . . :
Description . . . . . : Bluetooth Device (Personal Area Network)
Physical Address. . . . . : 1C-
DHCP Enabled. . . . . : Yes
Autoconfiguration Enabled . . . . : Yes
```